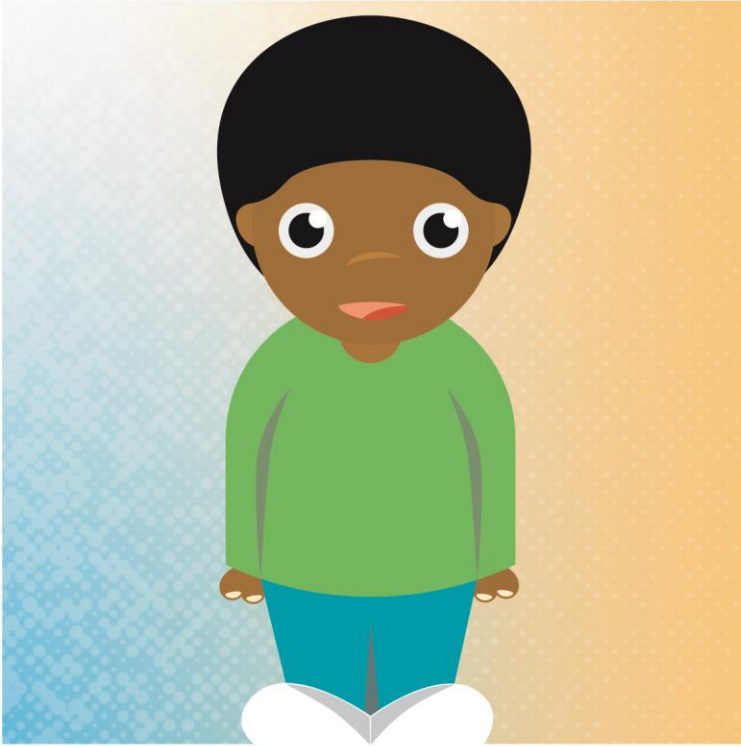


WHEN IS SICK TOO SICK FOR SCHOOL?



SEND ME TO SCHOOL IF...

- I have a runny nose or just a little cough, but no other symptoms.
- I have not had a fever for 24 hours without taking fever reducing medicine.
- I have not thrown up for 24 hours.
- I have not had diarrhea for 24 hours.

KEEP ME AT HOME IF...

- I have a fever: Temperature above 100° F (taken by mouth) without the use of fever reducing medication.
- I have diarrhea.
- I am throwing up.
- I have a rash (Covering my entire body.)

When your child has any of these symptoms, he/she must be kept at home the next day from school. The child will need to be without symptoms for a full 24 hours before returning to school.

IF YOUR CHILD IS OUT OF SCHOOL DUE TO ILLNESS, PLEASE NOTIFY THE SCHOOL.