



Percy Priest Elementary School

*Replacement Building for
Percy Priest Elementary School
PTO Meeting
October 17, 2023*



David Proffitt

Executive Director,
Facilities, Maintenance & Construction

Casey Megow

Director,
Facility Planning & Construction

Aaron Simon

Project Manager



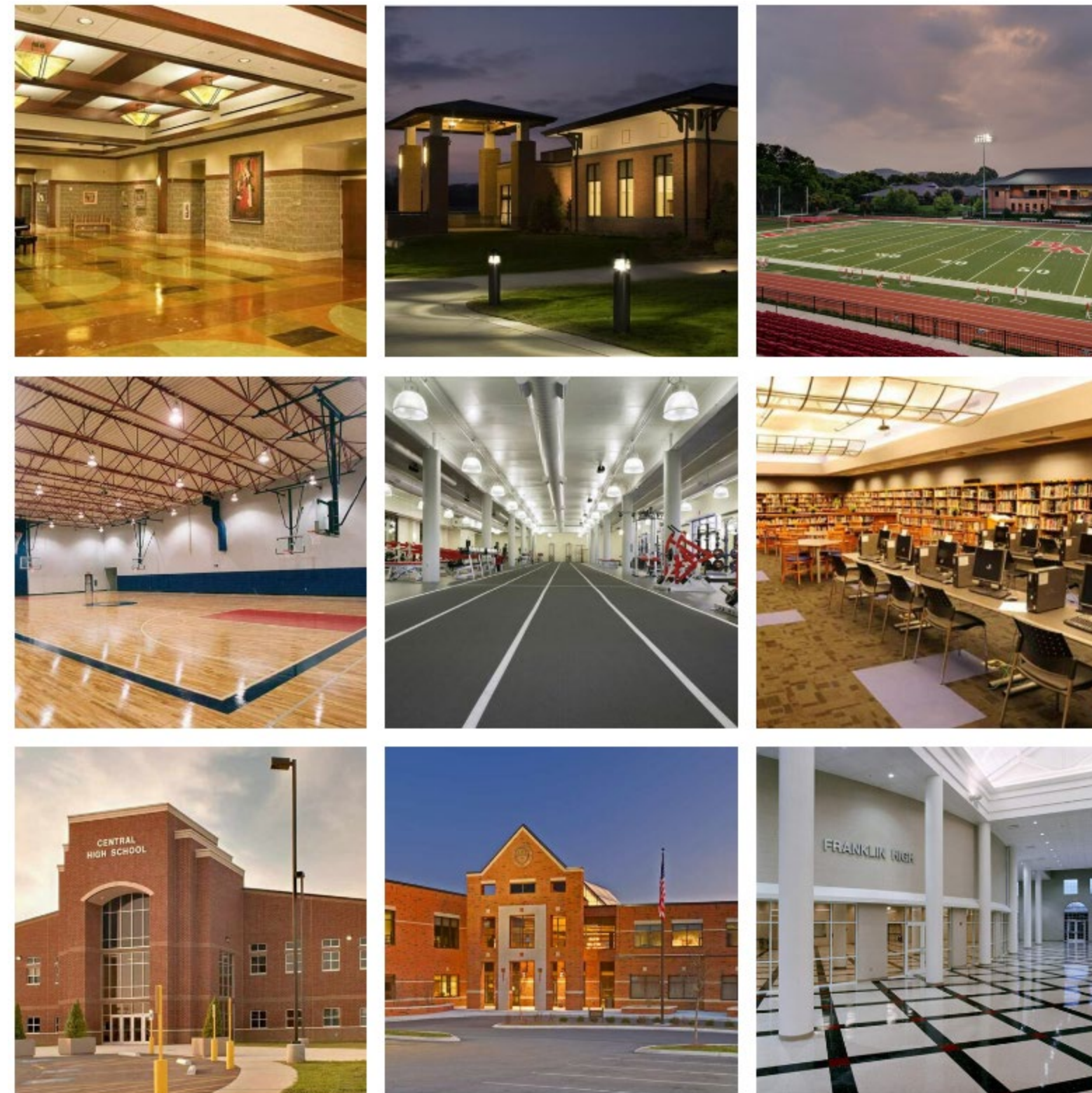
Percy Priest Elementary School

Current Capacity – 494 students
New Building Capacity – 743 students

Opening August 2025



- 43 years in business in Nashville and Middle TN
- 16 LEED certified projects completed to date
- 3 MNPS projects completed in the past 5 years





October 17, 2023

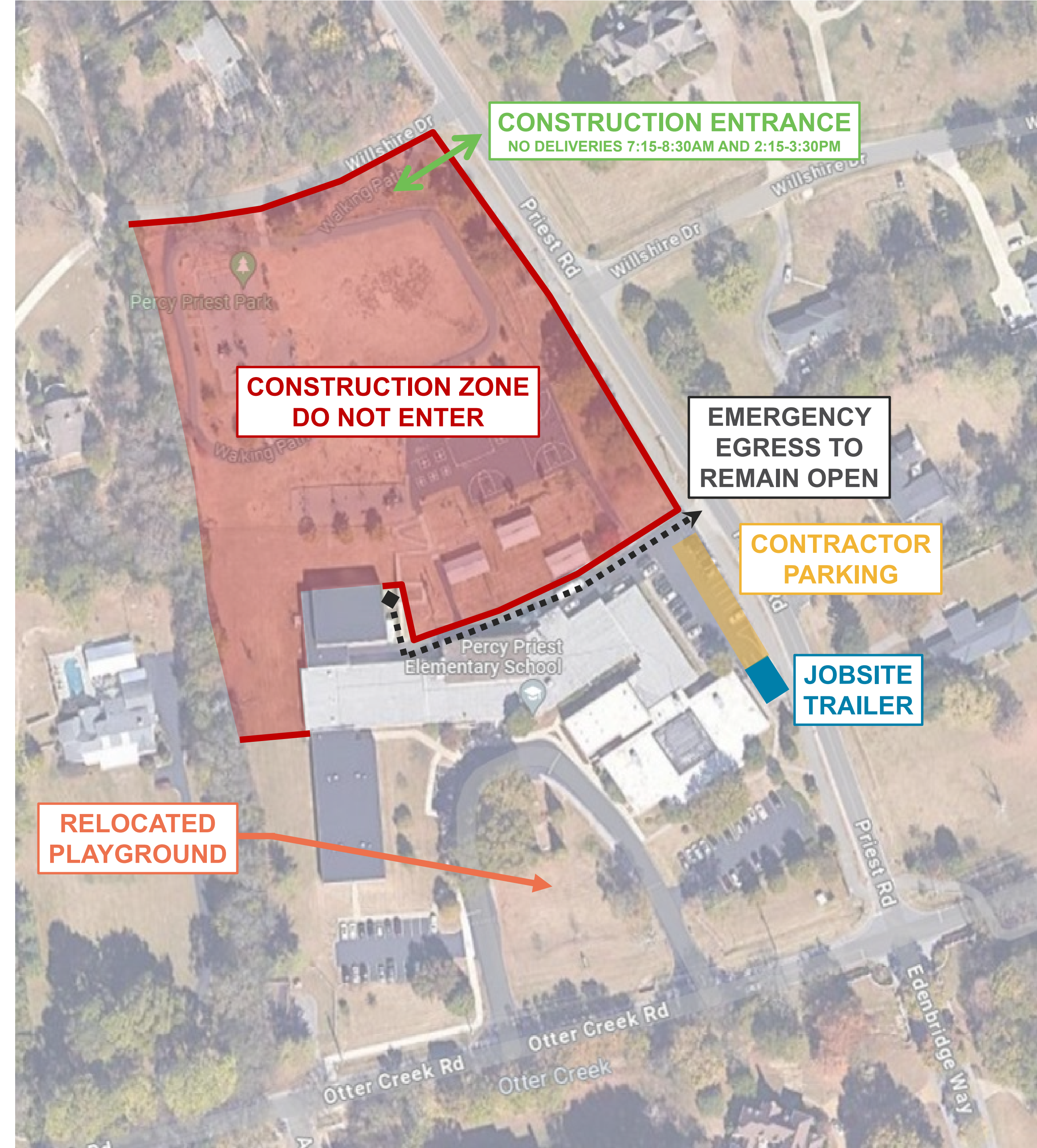
Site Safety

American Constructors' team is committed to ensuring all employees:

- Have a background check
- Are badged/identified clearly
- Are wearing proper OSHA approved safety attire

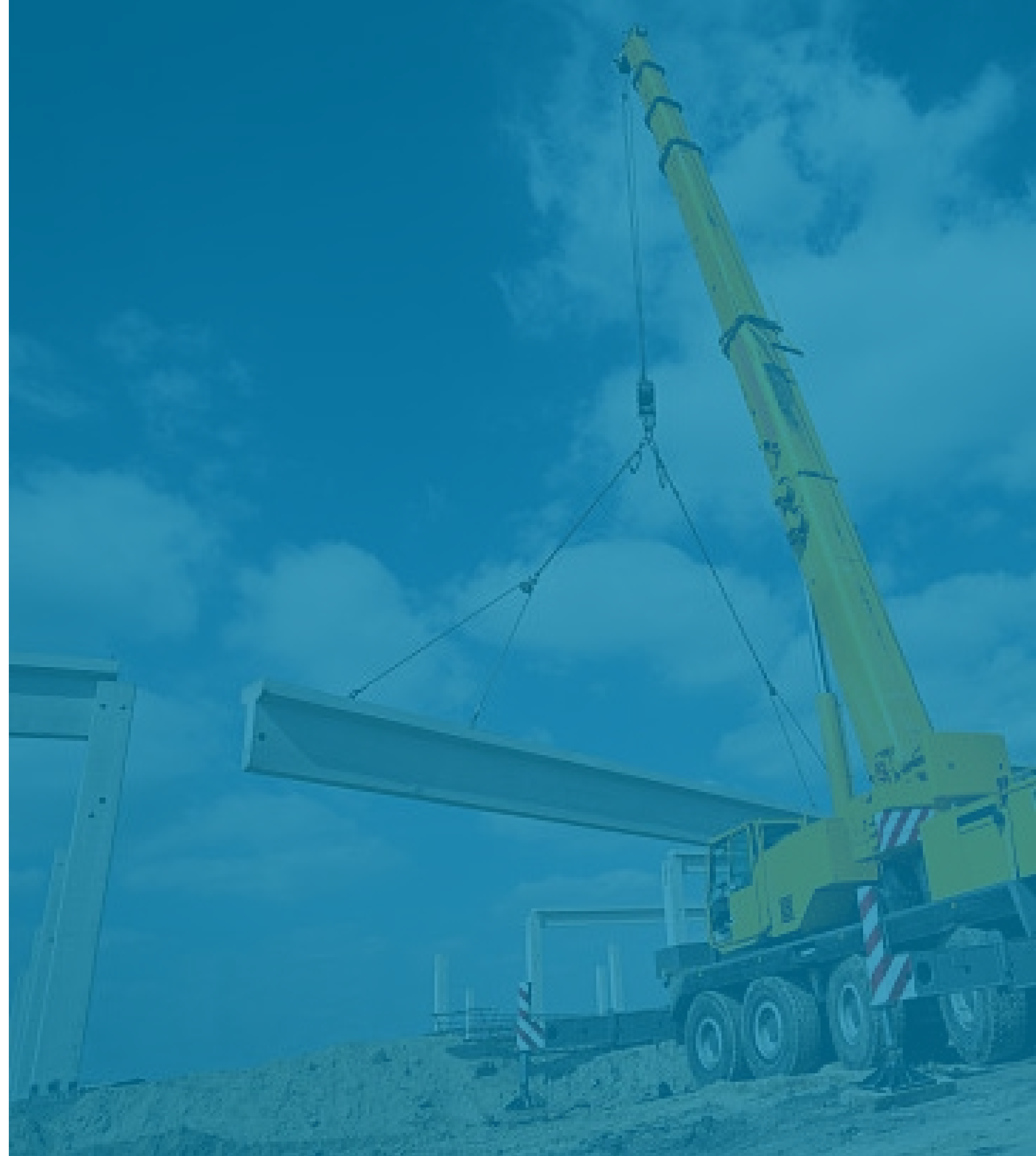
Working on an Operational Campus

“Our superintendents will be at the site full-time and be in communication with the school administration so there are no surprises.”



Timeline

- **October 2023** – Site demolition and topsoil removal
- **November - December 2023** – Excavation (blasting)
- **December 2023 - April 2024** – Building foundations
- **May 2024** – Masonry walls (Start going vertical!)
- **August 2025 (start of school)** – New building opens
- **August 2026** – Final campus completion

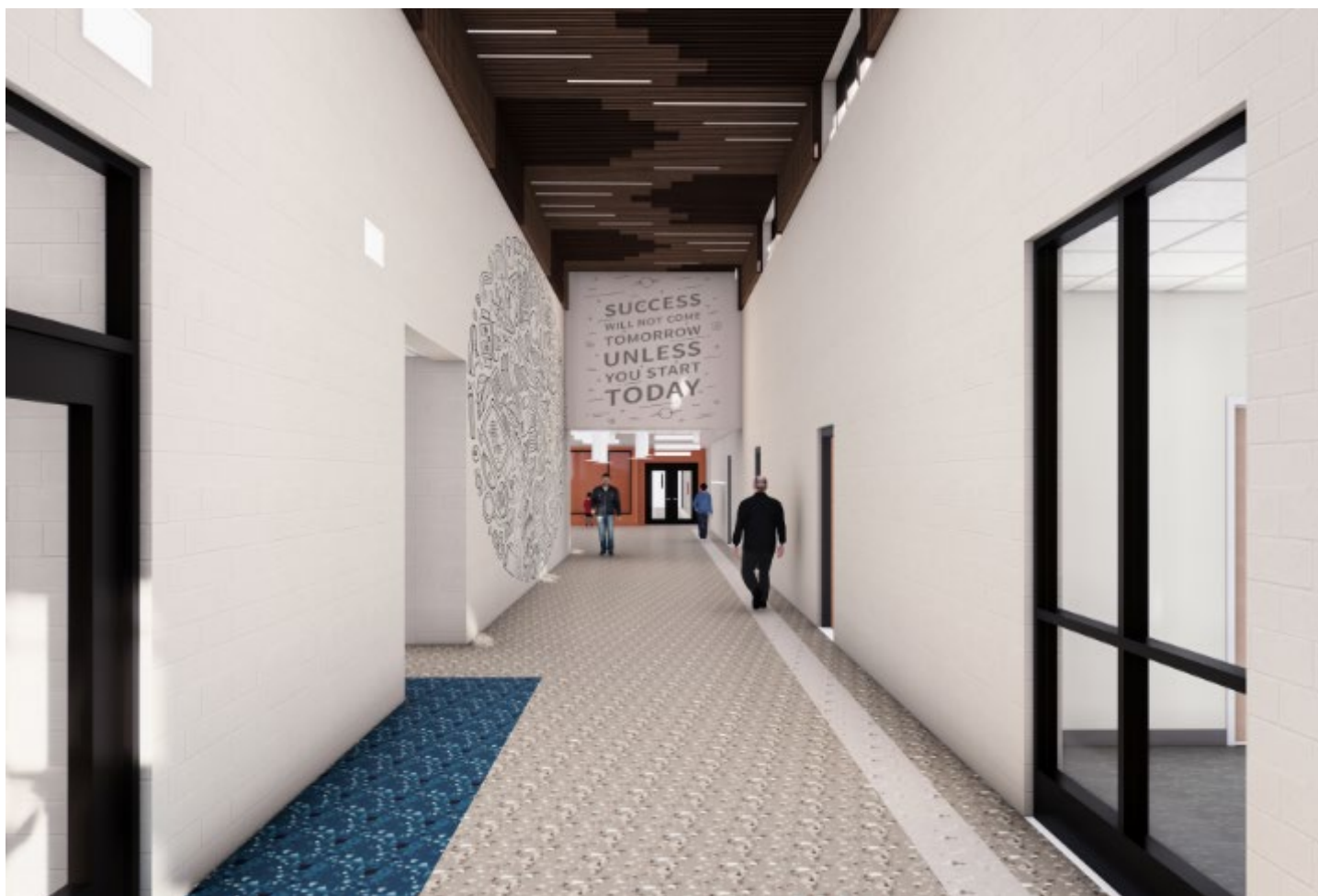




PERCY PRIEST ELEMENTARY SCHOOL

1700





Interior Views



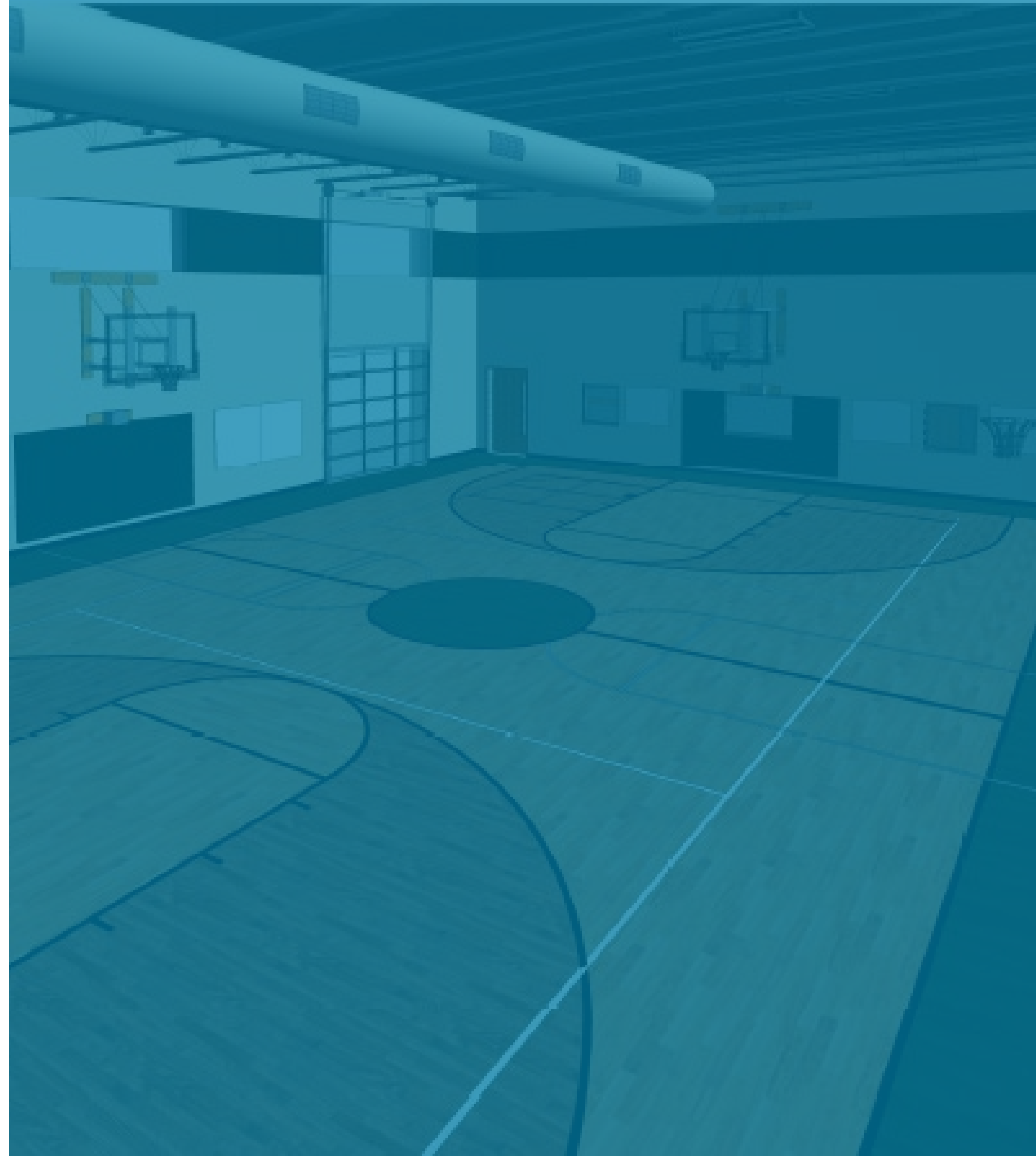


Upgrades

Percy Priest ES Replacement School

PTO and MNPS Funded Improvements

Item	
1	Sports Floor in Playroom
2	Two additional Basketball Goals + Wall Padding
3	Floor Inserts for Volleyball net
4	A/V System in Playroom
5	Motorized Blackout Shades in Playroom
6	Additional Acoustic Wall Panels
7	Side and Backstage Curtains for Platform
8	Electrical for Stage Lighting
9	Stage Lighting
10	Rugs for Grades 2-5
11	Bonded Rubber Play Surface
12	Concrete Walking Loop/Path
13	Additional Landscaping (PTO must maintain)





METRO
NASHVILLE
PUBLIC
SCHOOLS

Percy Priest Elementary School

Questions



JJCA